

# CYHEREAN-SEP

## A CONCEPT OF PLANETARY EXPLORATION

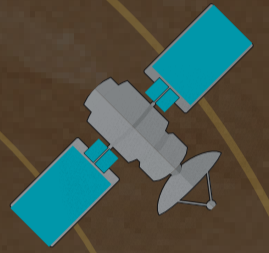
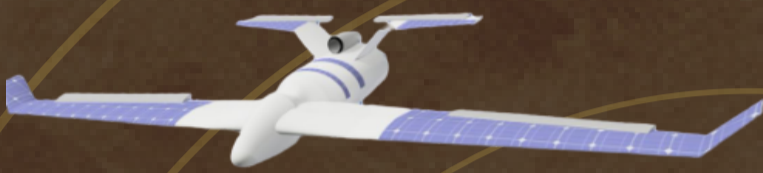
Mission Operation  
Time:

(>=) 95

Earth days

### THE EXPLORATION PLATFORMS

We propose a concept of planetary exploration, focused on the Venus planet, through an Orbiter, a Unmanned Aerial Vehicle with scientific instruments, and auxiliary drones.



How does the atmospheric dynamics of Venus work, what is its structure and the components of existing gases?

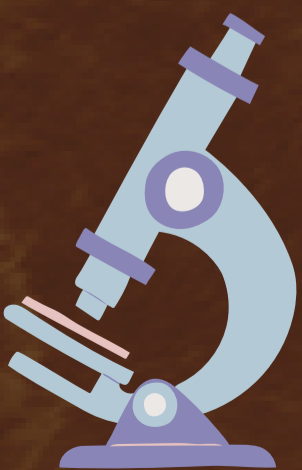
Why is there currently a large amount of heat generation on the surface of Venus? and What is the chemical morphology and variability of compounds and isotopes in Venus Clouds?



What is the actual pressure and temperature of the Venusian surface? Do these factors influence the generation of gases or the increase in global warming of Venus?

### Scientific instruments:

- RAMAN Spectrometer
- Synthetic Aperture Radar of Venus
- Climatic Radar
- Multispectral cameras
- Gases Analysis Chamber
- Cloud and Climatological Radar
- Sensor of Temperature & Pressure



EMAIL

[hello@inagx.com](mailto:hello@inagx.com)

WEBSITE

[www.inagx.com](http://www.inagx.com)



# MISSION PHASES

PHASE 1

PHASE 2

PHASE 3

PHASE 4

PHASE 5

PHASE 6

PHASE 7

PHASE 8

PHASE 9

EMAIL  
hello@inagx.com

WEBSITE  
www.inagx.com