

COMPARISON OF SPECTRAL PARAMETERS FOR HED DISCRIMINATION WITH DAWN DATA.

M. Schäfer¹, A. Nathues¹, M. Hoffmann¹, T. Schäfer¹, G. S. Thangjam¹, K. Mengel², C. T. Russell³, H. Sierks¹; ¹Max Planck Institute for Solar System Research, Justus-von-Liebig-Weg 3, D-37077 Göttingen, Germany, schaeferm@mps.mpg.de; ²Clausthal University of Technology, Clausthal-Zellerfeld, Germany; ³University of California, Los Angeles, CA, USA.

Introduction: Between 2011 and 2012, the Dawn spacecraft orbited 4 Vesta. Mapping of howarditic, eucritic, and diogenitic (HED) lithologies was performed by several authors using data of the onboard Framing Camera (FC) [e.g. 1, 2] and the Visible and Infrared spectrometer (VIR) [e.g. 3, 4]. Due to their differing wavelength range and spectral resolution, different spectral parameters were developed for both instruments to distinguish HED material. We investigate the correlation between these parameters and demonstrate that the FC is able to successfully discriminate between the HEDs, despite its limited spectral resolution and coverage.

Dawn FC is equipped with seven color filters, covering the wavelength range between 0.4 and 1.0 μm [5]. Dawn VIR holds two detectors for the ranges $\sim 0.5\text{--}1.0\ \mu\text{m}$ and $1.0\text{--}5.1\ \mu\text{m}$ [3].

Spectral parameters for HED discrimination:

The HED meteorite group differs by their pyroxene-to-feldspar proportions (and thus Fe and Ca content), allowing the spectral discrimination between HEDs [6]. Usually, the band center position of the two pyroxene bands at $\sim 0.9\ \mu\text{m}$ (B-I), and $\sim 2.0\ \mu\text{m}$ (B-II) are used as spectral discrimination features, e.g., by Dawn VIR [3]. We calculated the band center positions by fitting a 2nd order polynomial to the central band region after continuum removal, as described in [4].

The FC only sees a part of the B-I region; two filters at wavelengths 0.917 and 0.965 μm lie left and right of the B-I center. We show, that the FC ratio ‘Band Tilt’ (BT), presented by [2] to distinguish between HEDs, correlates strongly with the B-I center position. The BT parameter is defined using I/F reflectances R_λ at filter center wavelength λ as follows:

$$BT = R_{0.917\mu\text{m}} / R_{0.965\mu\text{m}}$$

This ratio, combined with another one, was already proposed in [7] to discriminate between eucrites and diogenites. Using Dawn FC data, [1] defined the spectral parameter $ED = 1 / BT$ in order to display more diogenitic or eucritic terrains on Vesta.

Comparison based on meteorites: We used all HED meteorite spectra available from RELAB with equal grain sizes in the range 0–25 μm (13 howardites, 29 eucrites, and 11 diogenites). Based on these 53 spectra, we calculated the spectral parameters used for

HED discrimination, i.e., B-I and B-II center positions. Likewise, parameter BT was calculated by applying FC filter bandpasses to the spectra. The B-I center varies between 0.917–0.927 μm for diogenites, 0.917–0.927 μm for howardites, and 0.927–0.949 μm for eucrites. As can be seen from Figure 2A, B-I and B-II center positions are highly correlated ($R^2 = 0.954$).

The values of the FC-based parameter BT should be linked with the B-I center position values, although they are not correlated from a spectroscopical point of view. The values are depicted in the scatter plot in Figure 2B. In order to get a purely descriptive number for the relationship between B-I center and BT, we calculated the mathematical linear correlation, which yields in $R^2 = 0.869$.

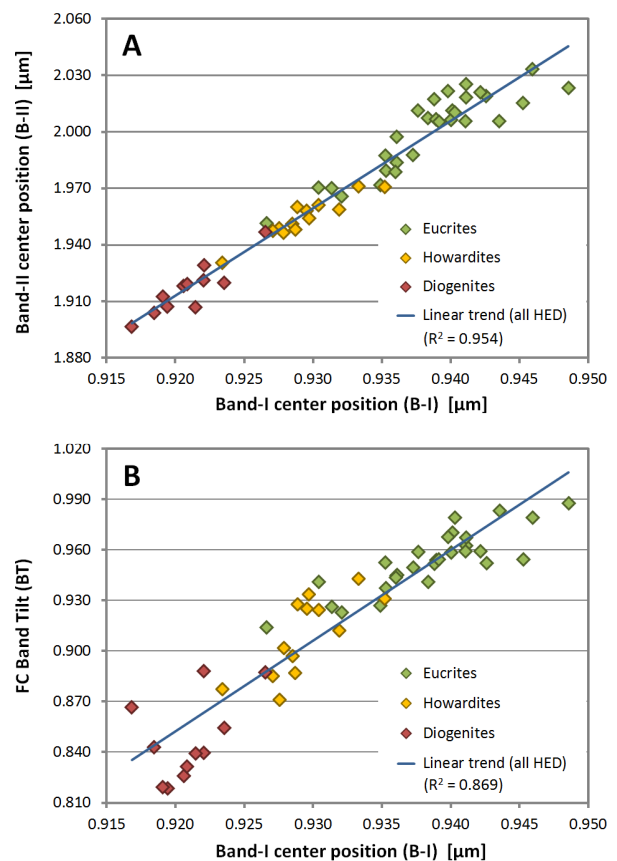


Figure 1: Scatter plots of (A) B-II center vs. B-I center position and (B) BT vs. B-I center position for all 53 HED meteorite spectra.

HED variations on Vesta: Dawn found a diversity of small-scale lithological variations on Vesta. Figure 2 displays as an example the vicinity of the craters Graecinia (237.0° E, 37.5° S; ~13 km diameter) and Lollia (242.3° E, 37.4° S; ~5 km diameter), showing diogenitic ejecta on a mostly howarditic background.

In Figure 2A, the FC-based parameter BT is depicted (based on an image mosaic with 50 m/pixel resolution), while Figures 2B and 2C illustrate the two band center parameters B-I and B-II, based on VIR data. For this purpose, we processed the two VIR scenes 371993041 and 372610272 (original resolution ~175 m/pixel).

Visually, the parameters are in good overall agreement, in spite of the threefold lower resolution and some image artefacts in the VIR data. Even small craters with diogenitic deposits south of Graecinia appear in all three parameter visualizations. Locally, however, some smaller discrepancies exist, e.g., in the NE part of the ejecta of Lollia. There, much more diogenites are indicated by VIR B-II than by B-I, while BT and B-I indicate some kind of gap in the diogenitic ejecta. This mismatch could possibly also be caused by mineralogical differences.

Conclusion: The band center parameters of B-I and B-II are highly correlated. We demonstrate that the BT parameter, based on FC filter reflectances in the region of B-I, mathematically correlates with the B-I center parameter. Thus, the FC filters can be used to discriminate between HED lithologies, benefiting the high spatial resolution of the FC data.

However, further lithologies occurring on Vesta (e.g., dark and orange material) should possibly be treated differently. Also, potential minor olivine constituents in the local surface mixtures might modify the spectral shape.

A detailed comparison between BT and both B-I and B-II centers based on Dawn data, as well as global FC-based HED maps of Vesta, and more examples, are given in [8].

References: [1] Reddy et al. (2012) *Science*, 336, 700–704. [2] Thangjam et al. (2013) *MAPS*, 48-11, 2199–2210. [3] De Sanctis et al. (2013) *MAPS*, 48-11, 2166–2184. [4] Ammannito et al. (2013) *MAPS*, 48-11, 2185–2198. [5] Sierks et al. (2011) *Space Science Rev.*, 163, 263–327. [6] Gaffey (1976) *JGR*, 81-5, 905–920. [7] Le Corre et al. (2011) *Icarus*, 216, 376–386. [8] Schäfer et al. (2015) *MAPS*, submitted.

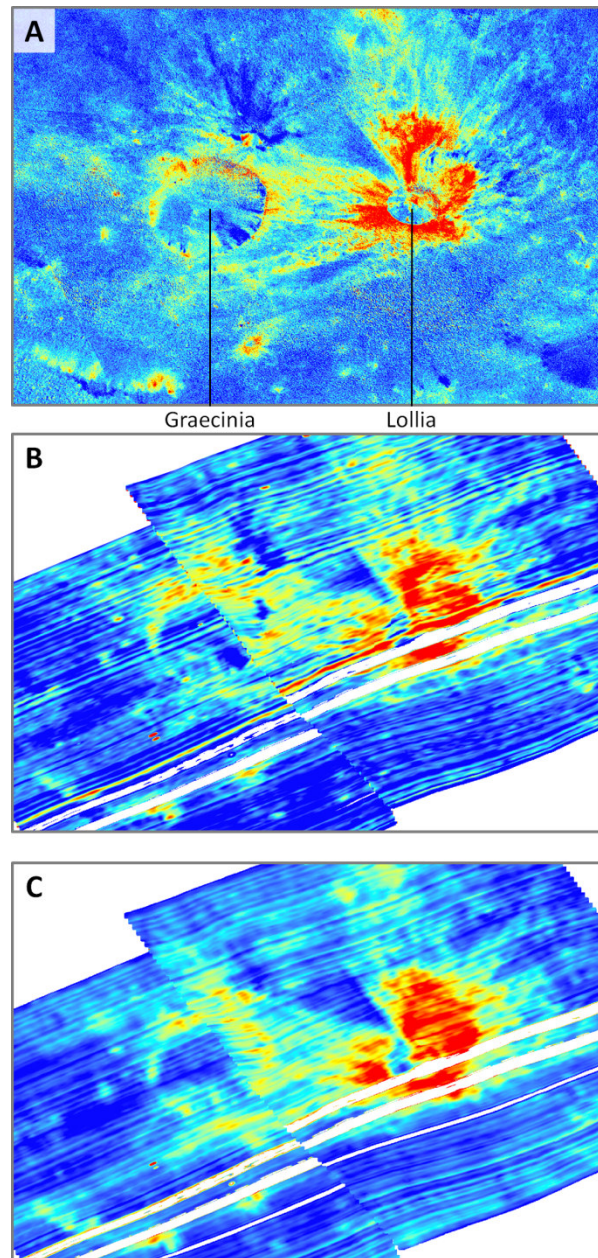


Figure 2: Color composites of spectral parameters at craters Graecinia and Lollia (approx. 60 x 50 km). (A) FC BT parameter, (B) VIR B-I center position, and (C) VIR B-II center position. Red colors exhibit diogenitic surface material, while blue colors display more howarditic material.

Acknowledgements: This research utilizes spectra acquired by several PIs with the NASA RELAB facility at Brown University. The Dawn FC project is financially supported by the Max Planck Society (MPS), German Aerospace Center (DLR), and NASA/JPL.