



The Electronic Fieldbook

A Field Science Support System For Astronaut Training And Planetary Exploration



L. Turchi^{1,5}, S.J. Payler^{1,2}, F. Sauro³, R. Pozzobon⁴, M. Massironi⁴, L. Bessone¹

¹Directorate of Human and Robotics Exploration, European Astronaut Centre - European Space Agency, leonardo.turchi@esa.int, loredana.bessone@esa.int, samuel.payler@esa.int, ²Agenzia Spaziale Italiana, Rome, Italy, ³Department of Biological, Geological and Environmental Sciences, Italian Institute of Speleology - Bologna University, cescosauro@gmail.com, ⁴University of Padua, Dipartimento di Geoscienze - Padova, ⁵Spaceclick S.r.l. - Milan

Introduction

During the Apollo EVA traverses, astronauts gathered a variety of data, including pictures, videos, audio recordings, geographic positions and scientific data. Post-mission, this information had to be integrated together in order to provide geological context for the scientific research. Compared to the Apollo missions, future EVA's on the surface of the Moon will be supported by a host of new technologies [1] used to collect scientific data and select the best samples for return to Earth [2]. How this data is stored and shared amongst all the mission support elements in real time will make a significant difference to the feedback that can be given to the EVA teams. Maintaining situational awareness for all personnel involved in the EVA will be a key asset for scientific decision making but will require that relevant information and reference knowledge is retrieved, collected, indexed, stored in a structured way and made available rapidly to the relevant mission participants.

As one of the main goals of future planetary exploration activities will be to perform geological science, astronauts are being trained in specific campaigns to gain field geology experience. The Electronic FieldBook (EFB) [3] has been the key supporting tool for the ESA PANGAEA/PANGAEA-X 2018 and PANGAEA 2019 campaigns, which offer planetary geology training integrated with operations and technology testing [4][5].

The types of visual information and data required to assess the lunar landscape is the same that field scientists typically gather on Earth when recording and assessing terrestrial geological environments. The science teams must be able to easily understand the provenance and context of a particular image, note, or measurement, in order to make an effective assessment. This outcome is also underlined in recommendation 6.3.7.1b of the Artemis III Science Definition Team report [6].

PANGAEA TRAINING & PANGAEA-X TEST CAMPAIGN

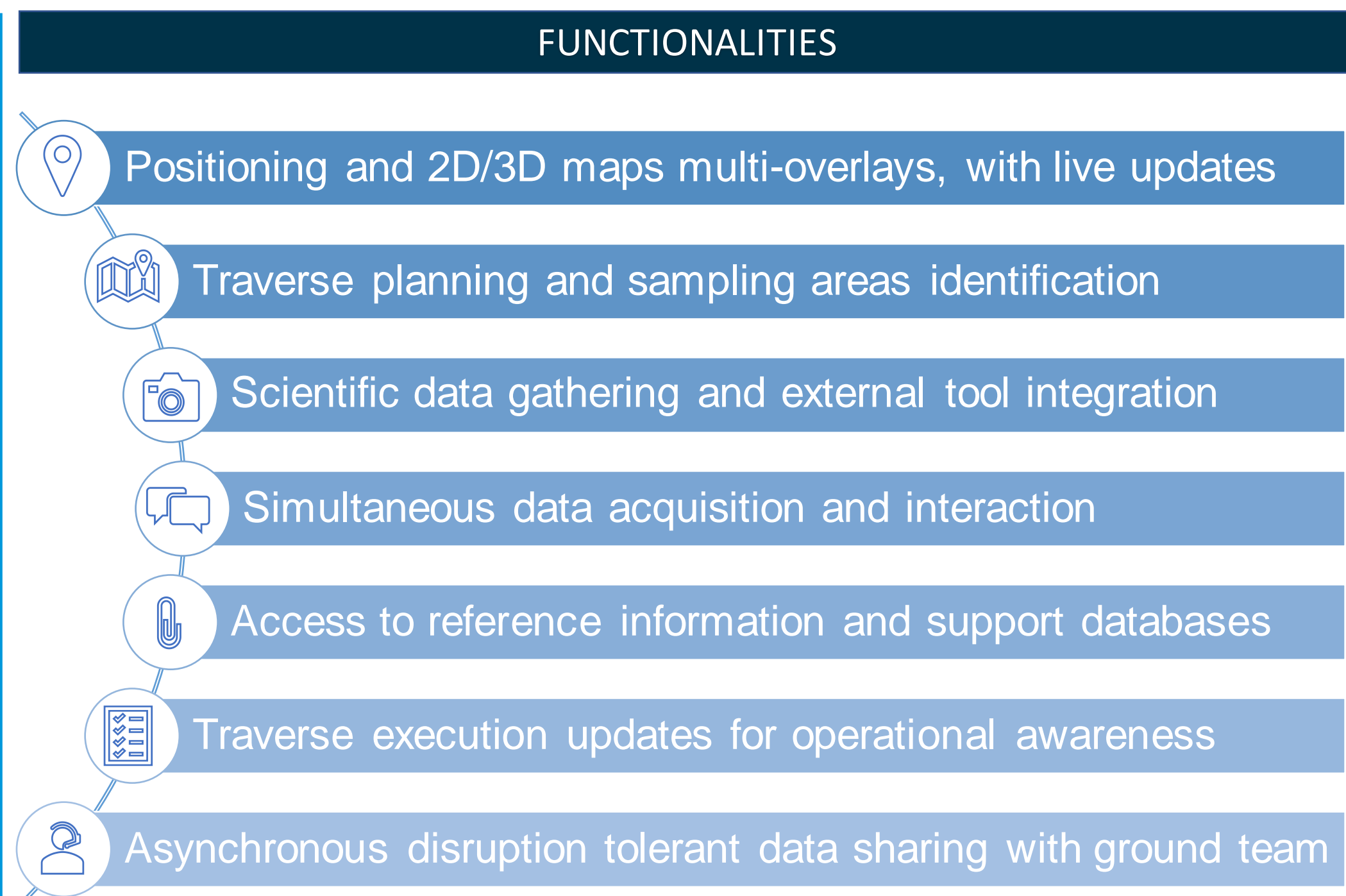


The tablet is used to document the sampling site and to transfer the observations to the ground support team for evaluation.

The Electronic FieldBook

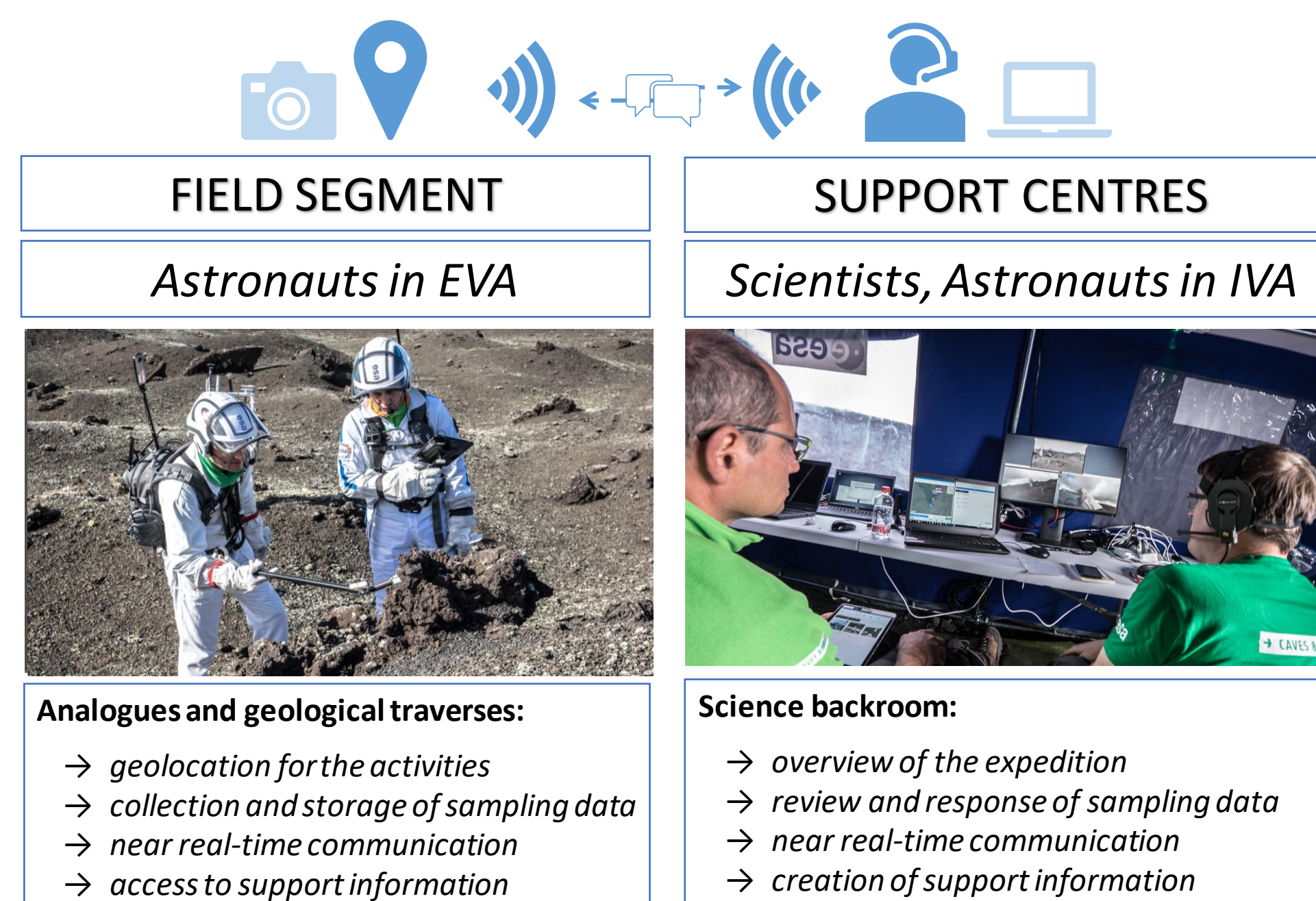
Traditionally, in planetary geology analogue campaigns, data is separately captured through a multitude of devices and stored locally. Rarely is it integrated into an overall data collection and distribution system [7]. In order to improve the effectiveness of operations, scientists located in a support centre control room should ideally receive, in near-real time, a relevant portion of the data acquired in the field [8]. This allows them to provide scientific and operational guidance to the astronauts whilst they are in the field. In addition, astronauts require information pertaining to navigation, decision support tools and other and reference information to augment their effectiveness and autonomy.

The Electronic FieldBook (EFB) is a deployable system being developed to meet these needs. It is designed to support field mission operations, scientific data gathering and direct interaction with mission control and science support teams through automatic data transmission. The system provides a structured way to collect data during geological traverses, where astronauts can interact with a number of sensors, collect data and/or samples, and take notes. This is all then automatically associated to specific sites or samples.



The project is being designed to provide real time data and situation awareness to the following primary entities [9]:

- **“Field Segment”** (Astronauts in EVA) which requires a portable tool to retrieve reference geological and navigational information, document locations, sites, samples, collect notes and drawings, capture scientific data from analytical tools and communicate with other users during a geological traverse.
- **“Support Centre”** (Sci & Ops ground teams or support astronauts in IV) which requires a real-time overview of the EV team's progression through a traverse, and observations and data collected, in order to direct or support the operations but also to provide relevant and informed scientific advice.

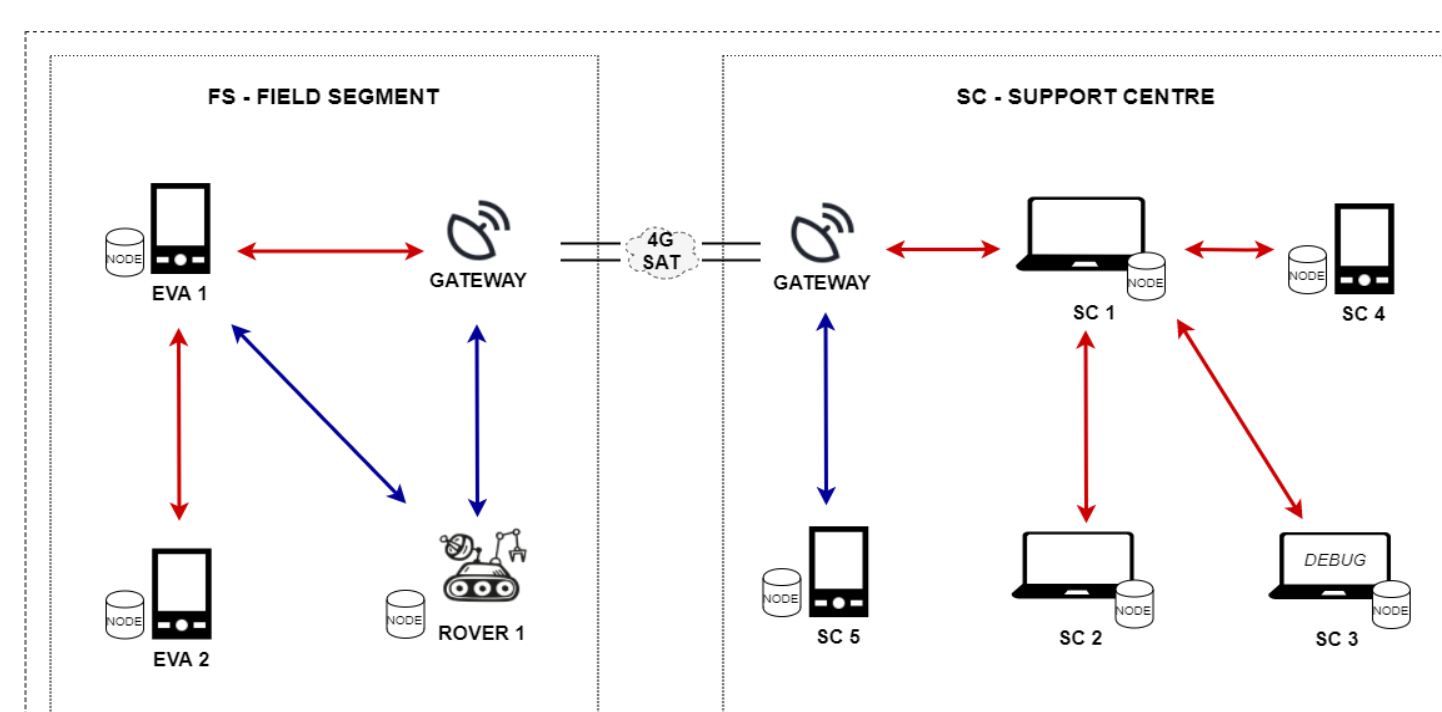


The types of information that can be retrieved, collected and exchanged includes, but is not limited to: geolocation, rich text, photos, 360 photos, audio, videos, maps, surveys, reference files, support databases.

One of the main functionalities of the EFB is the continuous and automatic data flow amongst field and ground. The EFB uses a dedicated wireless mesh network to ensure the replication of data across multiple nodes [10][11], allowing two distant nodes to share a database without direct connection, and relying on a series of inter-nodes to transfer replicated data.

The system comes as a fully integrated package including:

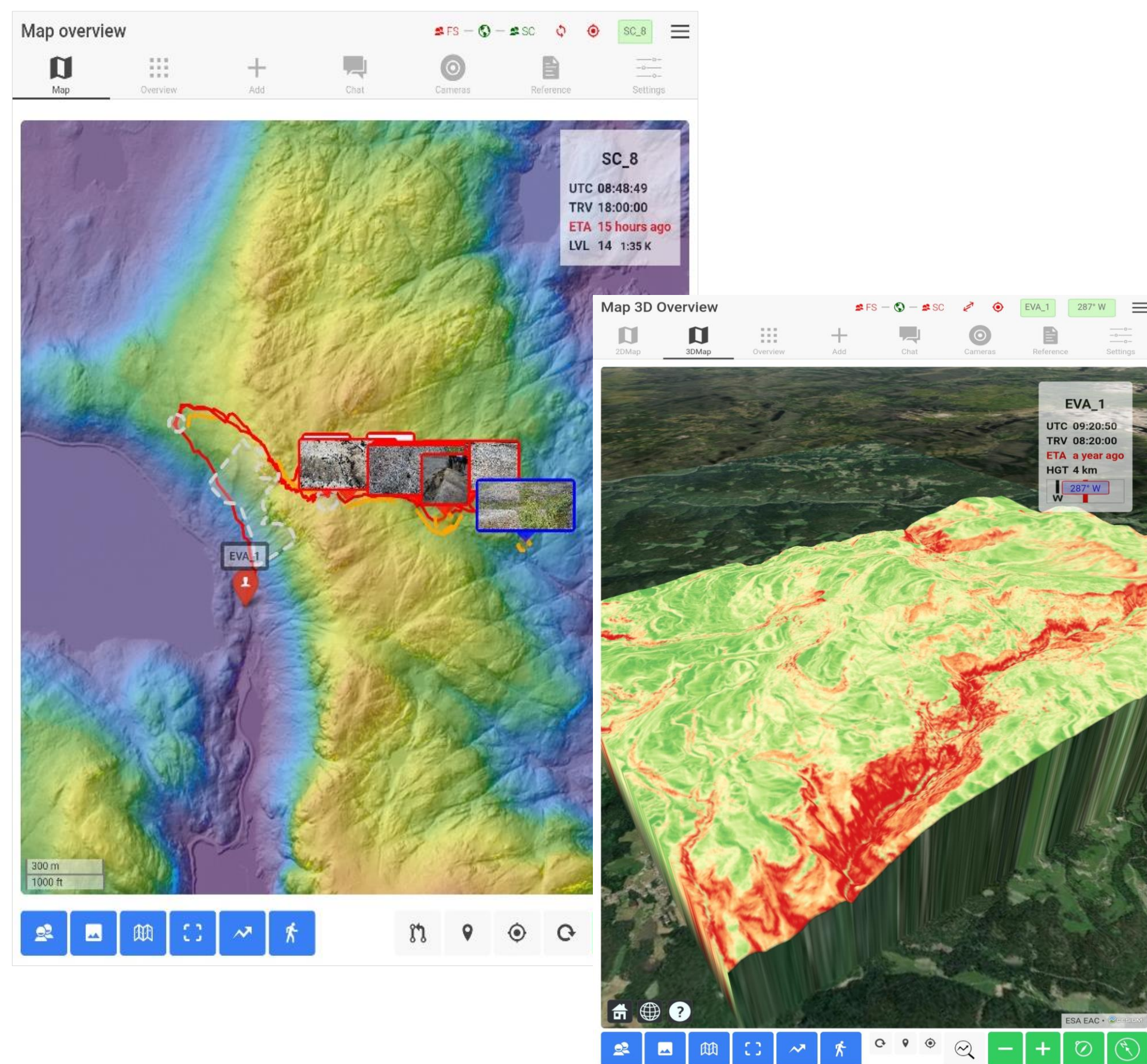
- ✓ Devices for easy Human Interaction, basing on the deployment needs: smartphones, tablets and laptops
- ✓ Portable, lightweight, waterproof devices and sensors with long battery lives
- ✓ Wireless mesh data transmission and disruption tolerant data communication between each system node
- ✓ Data forwarding for long range applications, by use of specific antennas or consolidation nodes
- ✓ Data acquisition from every point on the deployed network (e.g. communication with sensors left in key positions)



The EFB data exchange is fully decentralized and customizable.



Using the EFB, ground teams can maintain situational awareness over a traverse, each geological stop, sampling site, and individual sample.



The EFB 2D and 3D map interfaces for traverse overview display.



EFB wireless network repeaters.

Future implementations

The project is looking to add additional functionalities in the future. These include the integration of specific panoramic-bifocal cameras for quick environmental inspection and assessment, the wireless integration of analytical tools for examining geological materials (e.g. VNIR, RAMAN, XRF, LIBS), the integration of Machine Learning (ML) autonomous classifiers [12] in support of field decision making processes, integrating the system into enhanced data displays such as Augmented Reality (AR) and Virtual Reality (VR) visors, and linking to other planetary geology databases like the PLANMAP program of Horizon2020.

Conclusions

For future interplanetary missions, science and sampling will be primary objectives of astronaut and rover traverses on the surface of the Moon and Mars. The EFB project offers promise for a structured way to collect data during geological traverses and to make them available to the crew and ground control, during these missions. The variety of interfaces provided by the EFB will also strongly enhance the efficiency of using portable analytical instruments as real-time decision-making support tools.

[1] Coan D. Exploration EVA System Concept of Operations. NASA, 2020. https://www.nasa.gov/sites/default/files/atoms/files/eva-scp-0042_xeva_system_con_ops_rev_1_final_dtd_10192020_ref.doc.pdf

[2] David A. Kring. Geologic Tools for the Moon. Review of Apollo. NASA Johnson Space Center, 2009. https://www.lpi.usra.edu/science/kring/lunar_exploration/geologicTools.pdf

[3] Leonardo Turchi et al., The Electronic FieldBook: a system for supporting distributed field science operations during astronaut training and human planetary exploration. Planetary and Space Science, 2021. <https://doi.org/10.1016/j.pss.2021.105164>

[4] ESA, European Space Agency, Human Spaceflight, What is Pangaea https://www.esa.int/Our_Activities/Human_Spaceflight/Caves/What_is_Pangaea

[5] ISECG (2020) The Global Exploration Roadmap Supplement – Lunar Surface Exploration Scenario Update. https://www.alohabscspaceexploration.org/wp-content/uploads/2020/08/ISEG_2020_supplement.pdf

[6] Artemis III Science Definition Team Report, 2020, NASA. <https://www.esa.int/sites/default/files/atoms/files/artemis-iii-science-definition-report-12042020x.pdf>

[7] G. Jeffrey Taylor, Exploring the Moon, NASA, 1997. https://www.nasa.gov/pdf/180555main_ETM_Teachers_Guide.pdf

[8] I. Musso, I. Salvoni, Space Exploration Strategies, Analog Field Activities, Altec, 2013. <http://www.spaceops.org/image/menus/AnalogFieldActivities.pdf>

[9] Extravehicular activity (EVA) and mission support centre (MSC) design elements for future human scientific exploration of our solar system. NASA Paper, 2015. <https://www.hsu.usra.edu/meetings/V2050/pdf/8201.pdf>

[10] NASA's Lunar Communications & Navigation Architecture. Technology Exchange Conference, 2007. https://www.nasa.gov/pdf/203072main_LAT%20C-N%20to%20ESTON%20TEC%202007-11-15%20rev2.pdf

[11] J. Friend, C. Saunders, S. Jason, M. Sweeting, M. Cosby, R. Fieckelny, J. Carpenter, B. Hufenbach, Solving Communications and Navigation Requirements for Small Lunar Missions. UNISEC-Global Meeting, 2016. http://www.unisec-global.org/pdf/uniseclod/day2/17_friend.pdf

[12] J. Jodha, P. Drozdovsky, I. Payler, S. J. Turchi, L. Bessone, L. & Sauro, F. (2021). Machine learning for recognizing minerals from multispectral data. Analyst, 146(1), 184-195. <https://doi.org/10.1039/D0AN01483D>